

NH MR 100-20/4500

NH MR 100-75/200SG

product on

1. The first part of the document is a list of the names of the authors of the report.

2. The second part of the document is a list of the titles of the reports.

3. The third part of the document is a list of the abstracts of the reports.

4. The fourth part of the document is a list of the full texts of the reports.

5. The fifth part of the document is a list of the references of the reports.

6. The sixth part of the document is a list of the conclusions of the reports.

7. The seventh part of the document is a list of the recommendations of the reports.

8. The eighth part of the document is a list of the appendices of the reports.

9. The ninth part of the document is a list of the tables of the reports.

10. The tenth part of the document is a list of the figures of the reports.

11. The eleventh part of the document is a list of the charts of the reports.

12. The twelfth part of the document is a list of the diagrams of the reports.

13. The thirteenth part of the document is a list of the photographs of the reports.

14. The fourteenth part of the document is a list of the maps of the reports.

15. The fifteenth part of the document is a list of the tables of the reports.

16. The sixteenth part of the document is a list of the figures of the reports.

17. The seventeenth part of the document is a list of the charts of the reports.

18. The eighteenth part of the document is a list of the diagrams of the reports.

19. The nineteenth part of the document is a list of the photographs of the reports.

20. The twentieth part of the document is a list of the maps of the reports.

o ve t co . to s

5

4

0

100

1

2

0

10

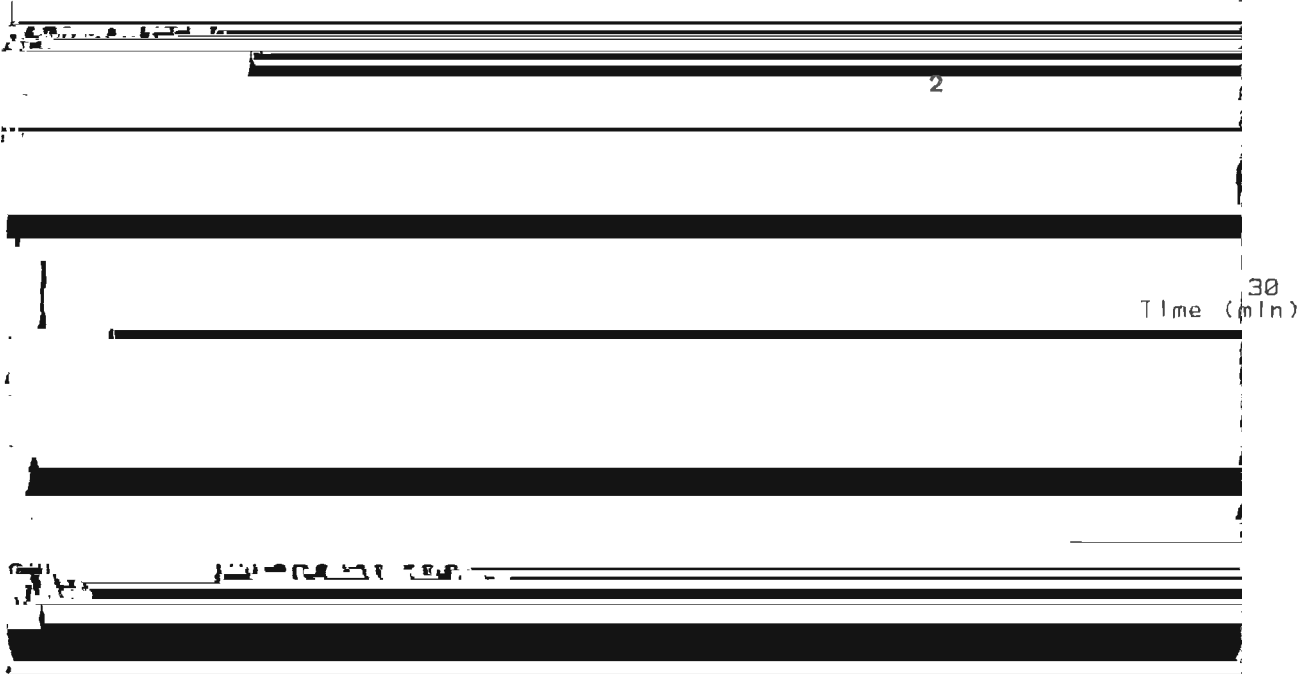
20

30
Time (min)

3

(2) Sugar separation of Oligosaccharide

Pretest_hv HPLC



Mobile phase: Acetonitrile/H₂O 70/30(w/w)

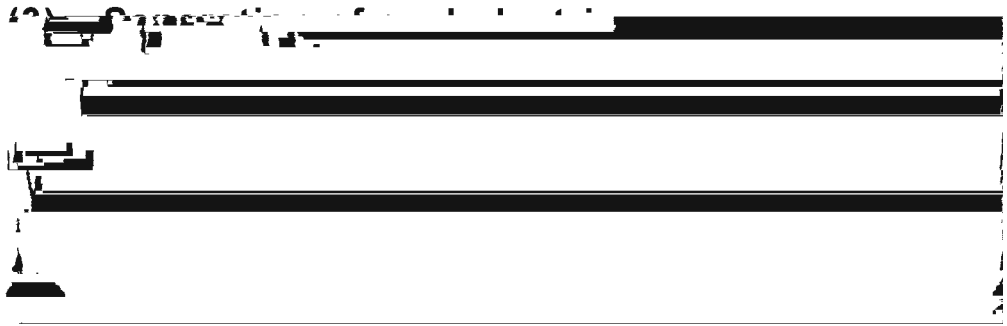
Flow rate: 2 ml/min

Detection: RI detector

Samples: 1. Isomaltose

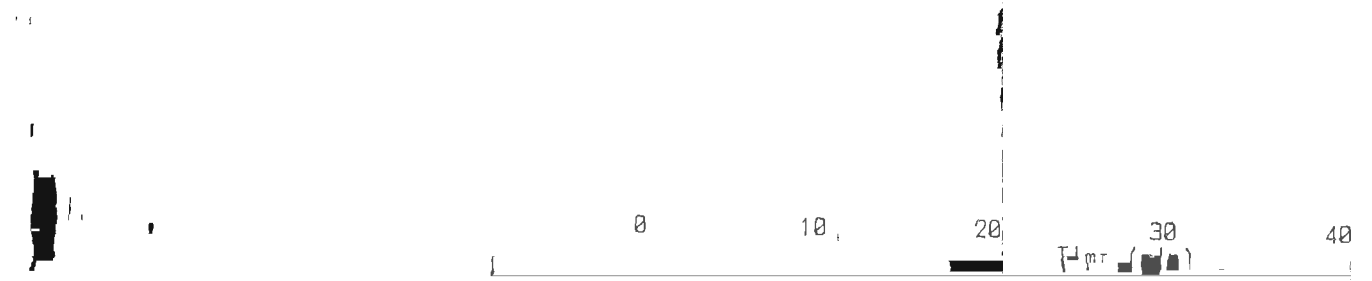
2. Isomaltotriose

Time (min)



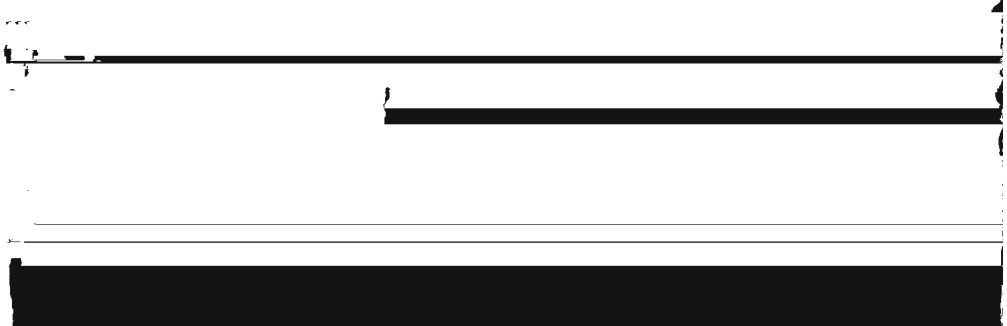
Pretest by HPLC

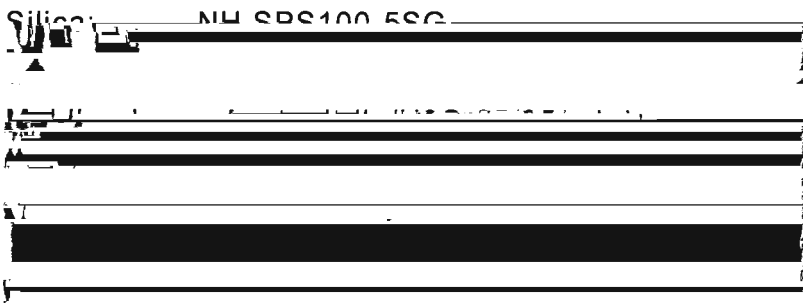
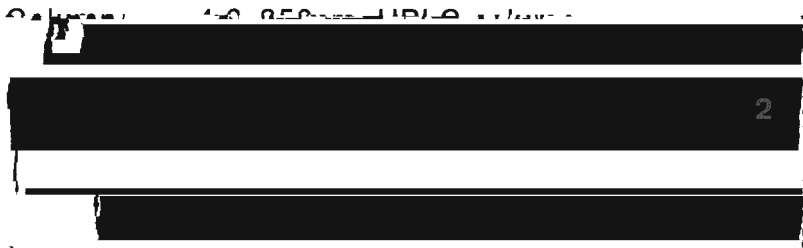
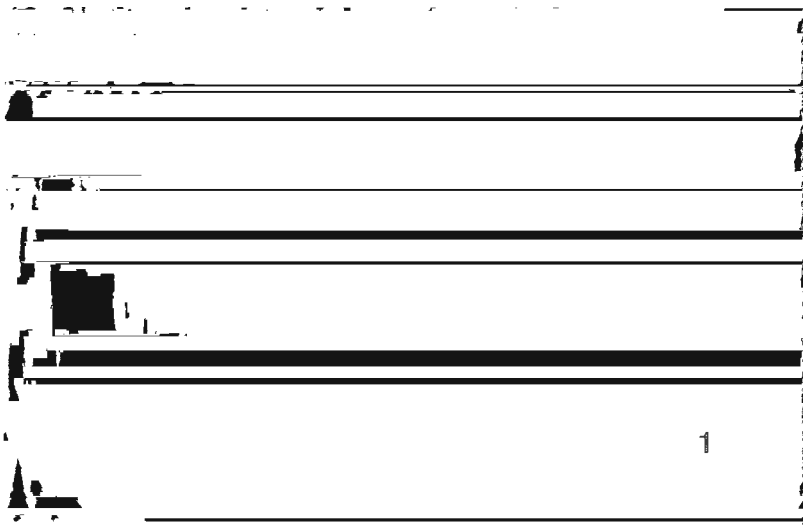
Column: 4.8x250mm HPLC column



Silica:NH: SPS100-5SG

Mobile phase: 40% MeCN in H₂O





20 30
Time (min)

2

1

0 10 20 30
Time (min)

